



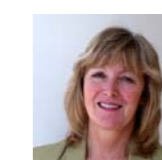
**Stephen Hillier**  
Regional Director for the  
Government Office for the East Midlands



**Phil Hope**  
Minister for the  
East Midlands



**David Walker**  
Regional Director  
of Public Health



**Jayne Banner**  
Non-Executive  
Director



**Martin Bryant**  
Non-Executive  
Director

As of January 2010



**Melanie Alker**  
Deputy Regional Director  
Corporate Strategy



**Anne Halliday**  
Deputy Regional Director  
Safer & Stronger Communities



**Abby Johnson-Brennan**  
Deputy Regional Director  
Economy, Jobs & Skills



**Rowena Limb**  
Deputy Regional Director  
Infrastructure Directorate



**Hâf Merrifield**  
Deputy Regional Director  
Children & Learners



**Jan Sensier**  
Deputy Regional Director  
Local Government & Localities



**Nick Longhurst**  
Assistant Director  
Corporate Strategy



**Peter Ward**  
Regional Resilience  
Director, Crowded Places  
Lead.



**Marie-Laura Huke**  
Assistant Director  
Economy, Jobs & Skills



**Alison Adams**  
Assistant Director  
Environment & Housing



**Will Wiseman**  
Assistant Director  
Planning & Transport



**Austin Brady**  
Assistant Director  
Children & Learners



**Christine Cassell**  
Children Service Advisor



**Garry Bryant**  
Area Director Derbyshire.  
Analytical support & Local  
Transformation



**Hazel Sutton**  
Area Director Leicester &  
Leicestershire.



**Marcie Taylor**  
Children Service Advisor



**Haydn Beeken**  
Area Director  
Lincolnshire &  
Northamptonshire



**Dave Tantum**  
Area Director Nottingham,  
Nottinghamshire & Rutland



**Isobel Coe**  
HR Business Partner



**Tanya Harrison**  
Head of Finance &  
Procurement



**Lynne Davis**  
Resilience Team Leader,  
Regional Response Lead,  
Risk Assessment Lead



**Colin Packman**  
Head of Community Safety,  
Regional Lead  
Leicester Lead



**Neil Fleming**  
Head of Economy



**Jill Pateman**  
Head of Social Exclusion



**Fiona Forgham**  
Head of Planning &  
Growth



**Mike Meech**  
Head of Sustainable  
Development



**Susan Ackermann**  
Head of Safeguarding &  
Looked after Children



**Ursula Harrison**  
Head of Early Years,  
Health & Parenting



**Steve Battlemuch**  
Locality Manager  
Derbyshire



**Marie Fitzgerald**  
Locality Manager  
Leicestershire &  
Lincolnshire



**Will Morlidge**  
Head of Regional  
Parliamentary &  
Ministerial Office



**John Wright**  
Head of Regional  
Strategy



**Janet Mills**  
Team Leader Third Sector  
& Stronger Communities  
Leicestershire Lead



**John Turner**  
Head of Offenders, Drugs,  
Acquisitive Crime &  
Offender Management  
Derby Lead



**Geoff Millner**  
Head of Jobs & Skills



**Dale Oscroft**  
Head of Transport Policy



**Karin Staples**  
Head of Housing



**Peter Holmes**  
Head of 14 - 19



**Neil Weightman**  
Policy & Performance  
Manager, Head of Youth,  
Youth Justice & Ministerial  
Work



**Kate Harley**  
Locality Manager Rutland  
& LAA/LG Policy Manager



**Maria Lyle**  
Locality Manager  
Nottinghamshire



**Ian White**  
Head of Natural  
Environment



**Bill Russell**  
Locality Manager  
Northants. Analytical  
Support Manager

Contact: Switchboard 0115 971 9971 GOEM website [www.goem.gov.uk](http://www.goem.gov.uk) email [enquiries@goem.gsi.gov.uk](mailto:enquiries@goem.gsi.gov.uk)